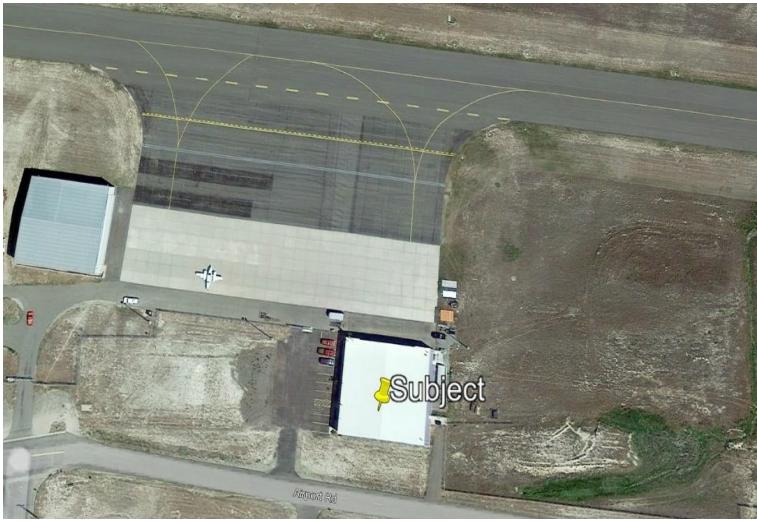


QUICKLY EXPAND YOUR AIRCRAFT OPERATION BY FALL 2024!

COMMERCIAL HANGAR – HELENA, MT

3232 Airport Road



^N

Google Image
dated
7/25/2014
(not to scale)

Expansion Potential:

Current Building Footprint: 100' x 100'

Clear Span Expansion – Additional
Space to South of 25' x 100'

Building Expansion – Additional Space to East of
132' minimum

Additional Buildings:

Available Space to Northeast (adjacent
to heavy ramp) and/or East

Additional Ramp:

Available Space to East (of existing
heavy ramp) 132' minimum

Current Parking: Paved Space for 19 vehicles

Parking Expansion – Additional space to
West &/or South

Hangar Specs:

Built in 1997 to Commercial Code

100' x 100' Clear Span

Electric Bi-fold Door 65' x 22'

Electric Roll-up Garage Door 10' x 10'

Four Entry Doors – 2 from ramp, 2 from Airport
Road

3 Phase Electric Service – Expandable

Phone lines – 16 pairs wired in

High Efficiency T-5 Hangar Lighting with
Occupancy Sensors

Four Natural Gas Heaters

Clean Burn Multi-Oil Heating System

Security System

Satellite Internet Access

Airport Grounds:

Heavy Ramp 132' x 210' – previously built for and
used by UPS

Taxiway C Immediately Adjacent to Heavy Ramp

Located within Helena City Limits

City Water and Sewer Service

Easy Access to Airport Road

Secure Drive Through Access Gate (from parking
to ramp)

Secure Walk Through Access Gate (from parking
to ramp)

Fire Hydrant

Access to Ramp – Direct Interior Control

Flood Lighting on Ramp – Dusk to Dawn

AVAILABLE FOR IMMEDIATE PURCHASE



Call (406) 442-8360 for more details

Or email gresens@mt.net

WHAT ARE THE BENEFITS OF STARTING WITH A PRE-BUILT COMMERCIAL HANGAR?

Available for immediate occupancy

Space to expand in every direction

Hangar can be quickly modified or added to for a lounge/waiting area

City services (water & sewer) already to hangar

Clear span hangar and heavy ramp can accommodate multiple large aircraft

Immediate access to Taxiway C

Easy access to I-5, Hwy 12, Hwy 282, Hwy 287

Close to downtown Helena, hotels, restaurants, etc.